

**Easy Organizer Suite™
Threads Organizer™ Module Pack
easythreads™ Module**

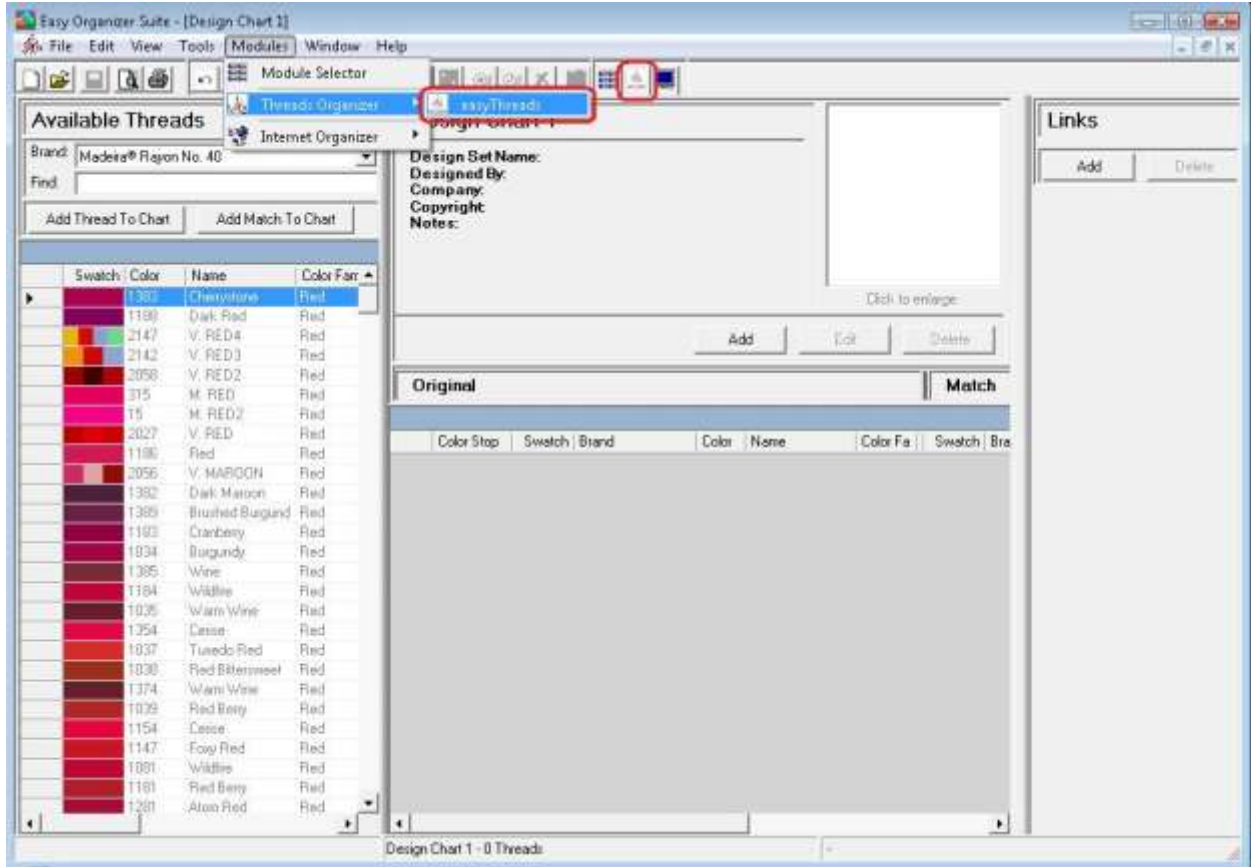
Lesson 25 - How to Use the Auto Importer

Welcome to the **easythreads™** Lessons series. As you follow through each lesson, you will learn new and exciting aspects of the **easythreads™** Module and by the end of the series you will be an expert! Each lesson will build on the last, so be sure to go through the series in order. Our twenty-fifth lesson will show you how to use the Auto importer.

The Auto Importer will create a Design Chart whenever an embroidery design file is placed in a folder that you specify. This feature is only available in the Pro Edition.

Using the Auto Importer

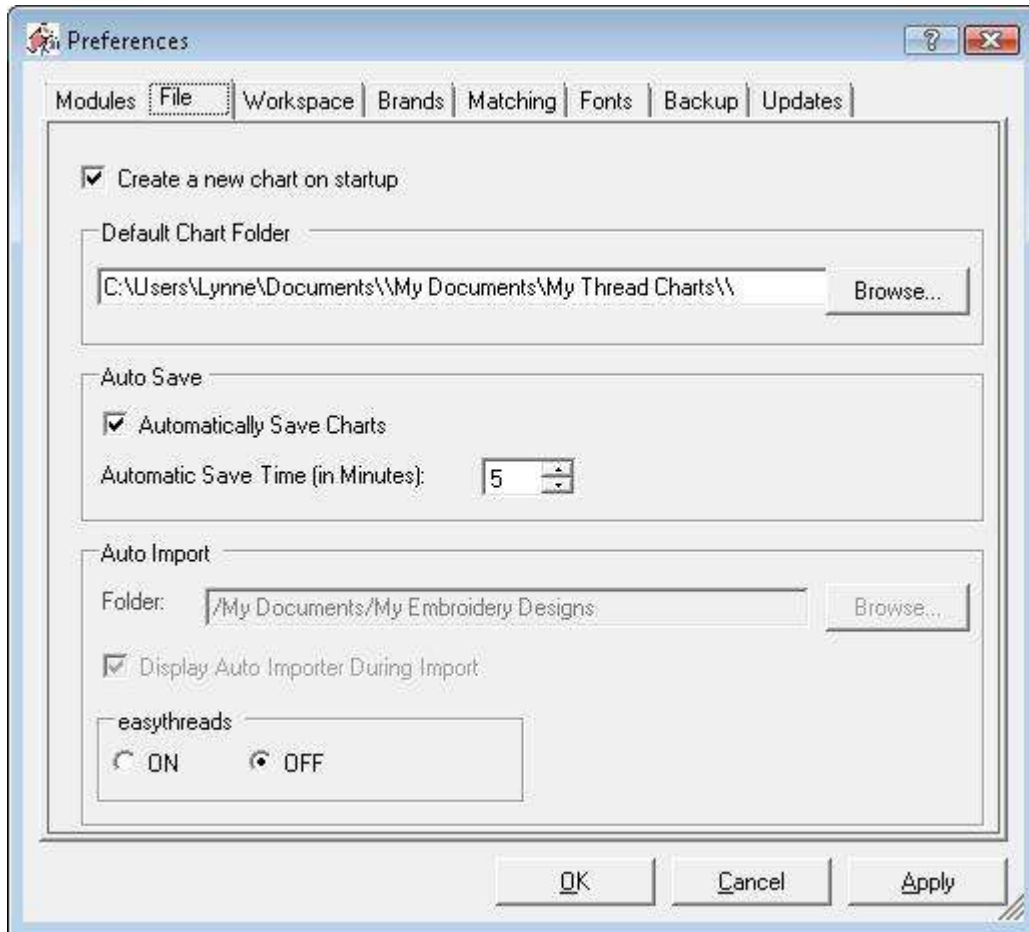
1. To begin, open **Easy Organizer Suite™** and select the **easythreads™** Module. If you are not already in the **easythreads™** Module, then select Modules → Threads Organizer → easythreads from the menu, or you can click on the **easythreads™** icon in the toolbar.



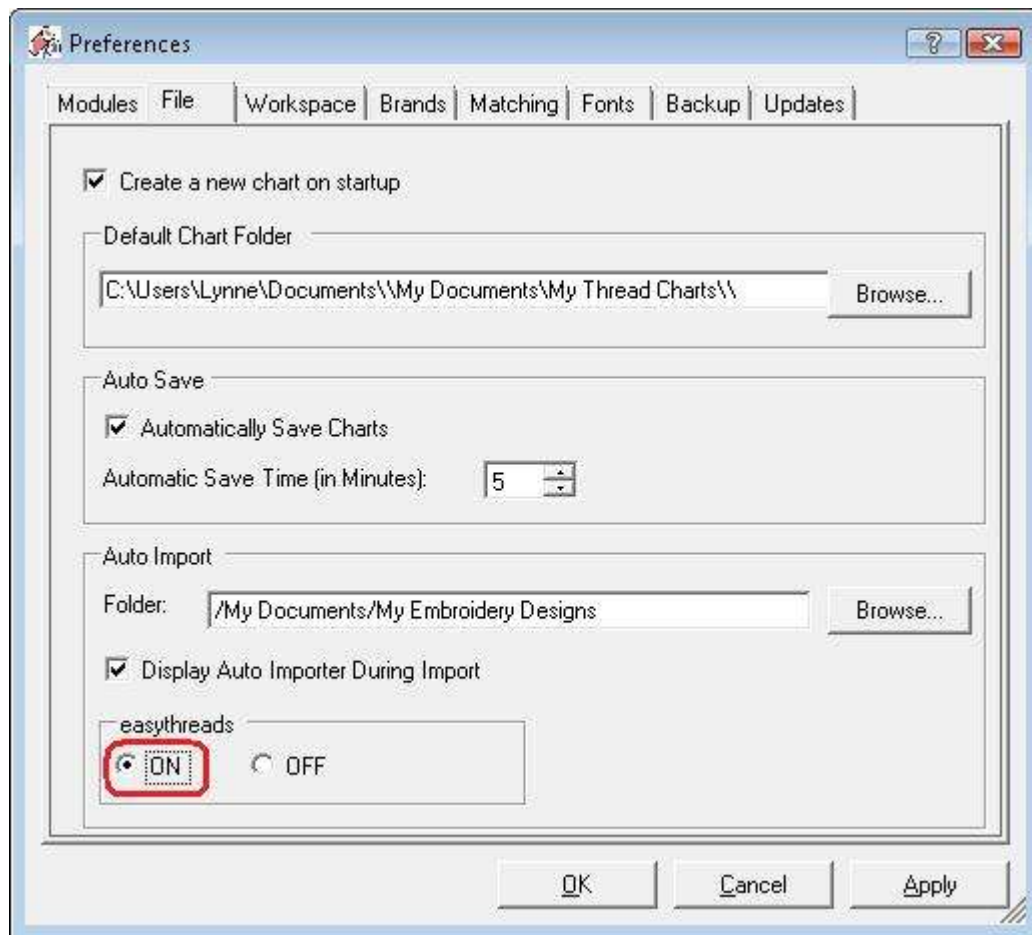
2. To turn the Auto Importer on, select File → Preferences.



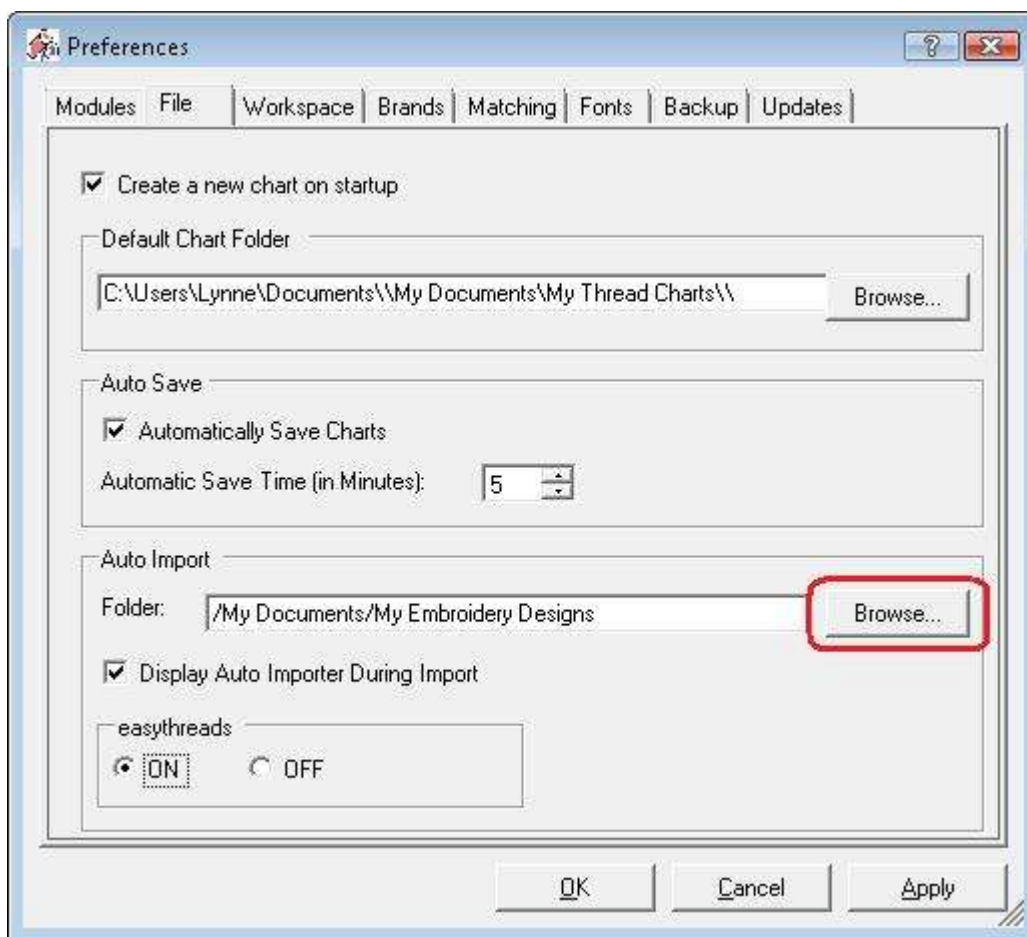
3. The Preferences form will open. Click on the File tab.



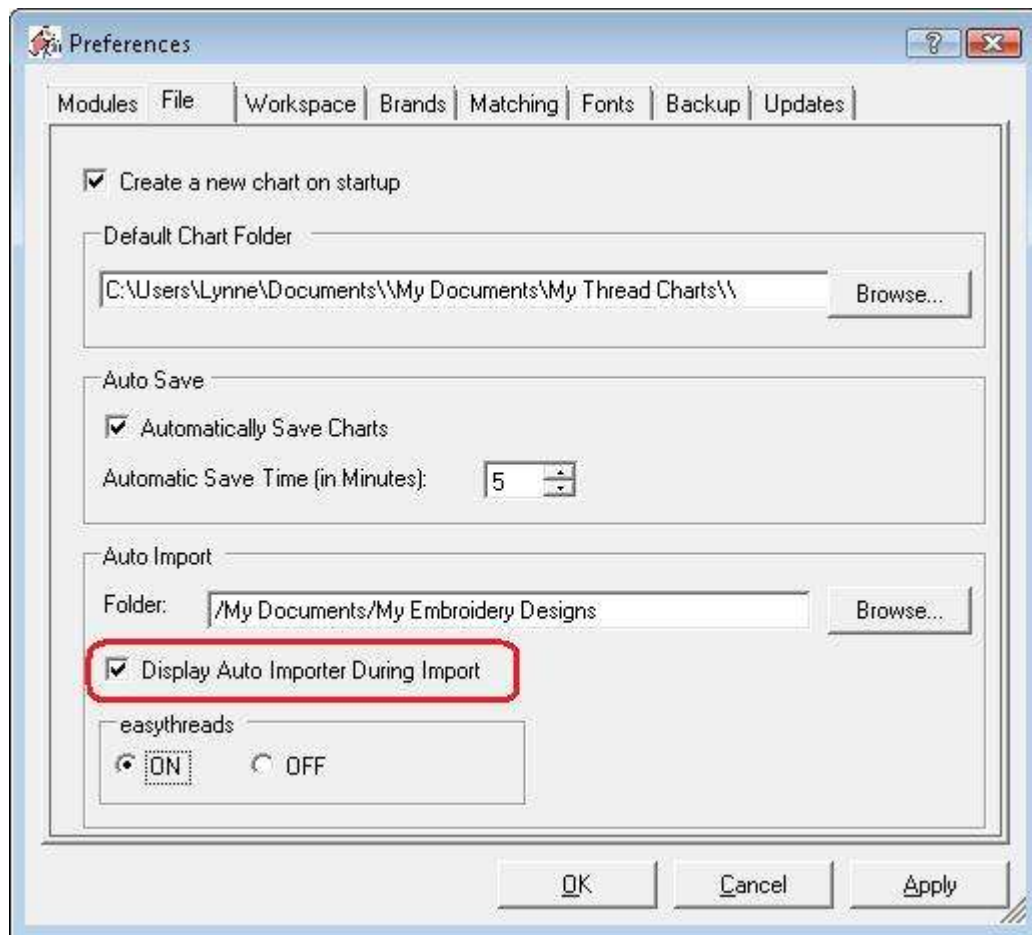
4. To turn the Auto Importer on, click on the ON radio button in the easythreads Module section. You will see that the Folder, and Display Auto Importer During Import controls are now enabled.



5. Click on the Browse button. This will open the Folder Dialog so you can select a Folder to watch. Select a folder where you keep your embroidery designs. Whenever an embroidery design of a supported format (jef, pcs, pes, sew, xxx, dst) is saved to that folder or it's subfolders, then the Auto Importer will create a Design Chart.

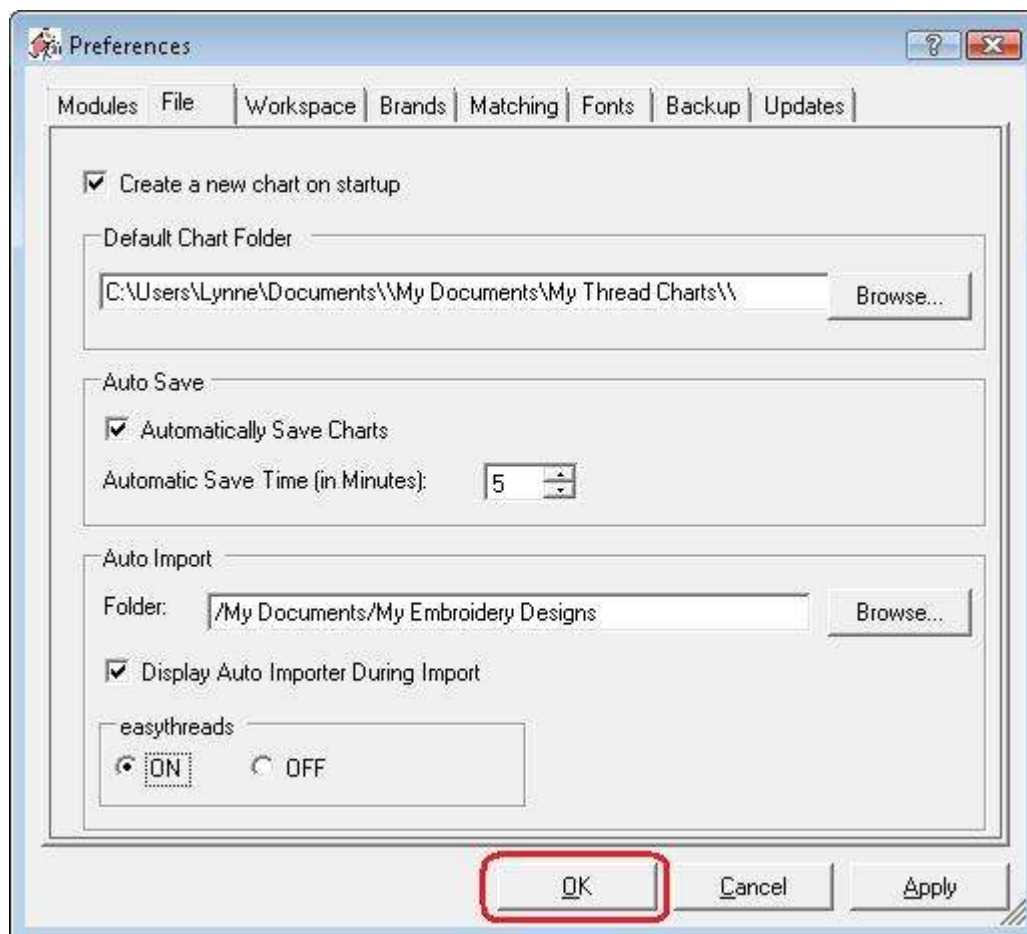


6. If you would like to see the Auto Import form while it is importing the embroidery design, the put a check mark in the Display Auto Importer During Import checkbox.

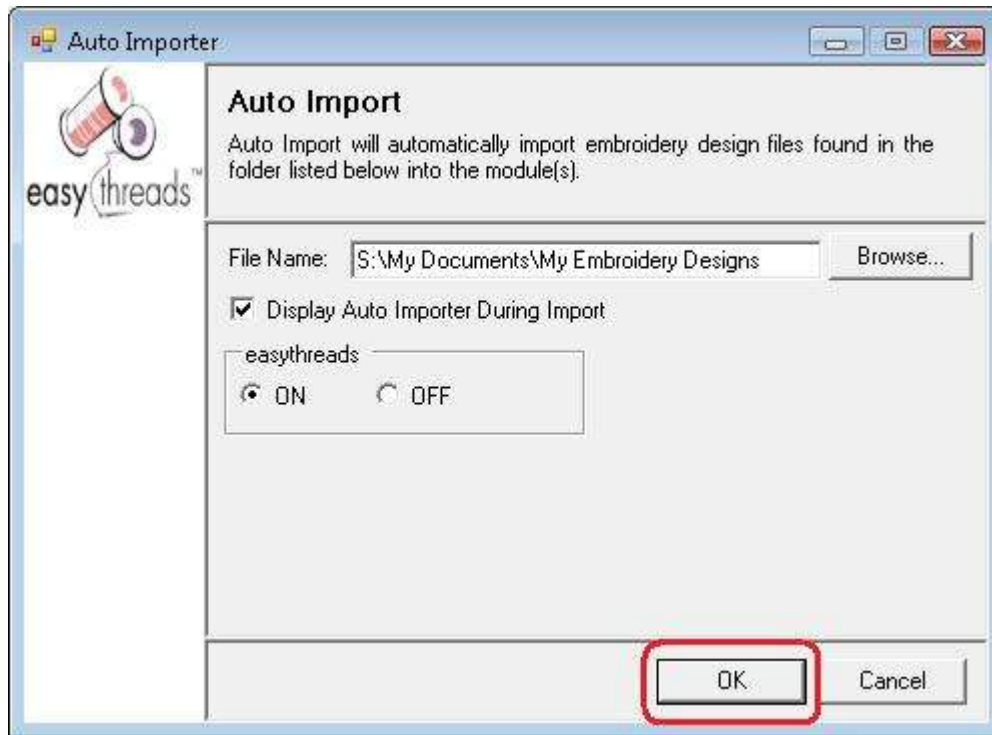


7. Click on OK. If the ON button is selected for the easythreads Module, then the Auto Importer will be turned on. If the OFF button is selected, then the Auto Importer will be turned off.

For this lesson, select the ON radio button, ensure you have a valid folder and check the Display Auto Importer During Import checkbox. Now click on the OK button.



8. You will see the Auto Importer open in the bottom right corner of your screen. It will begin watching the folder you have selected when you click on the OK button.

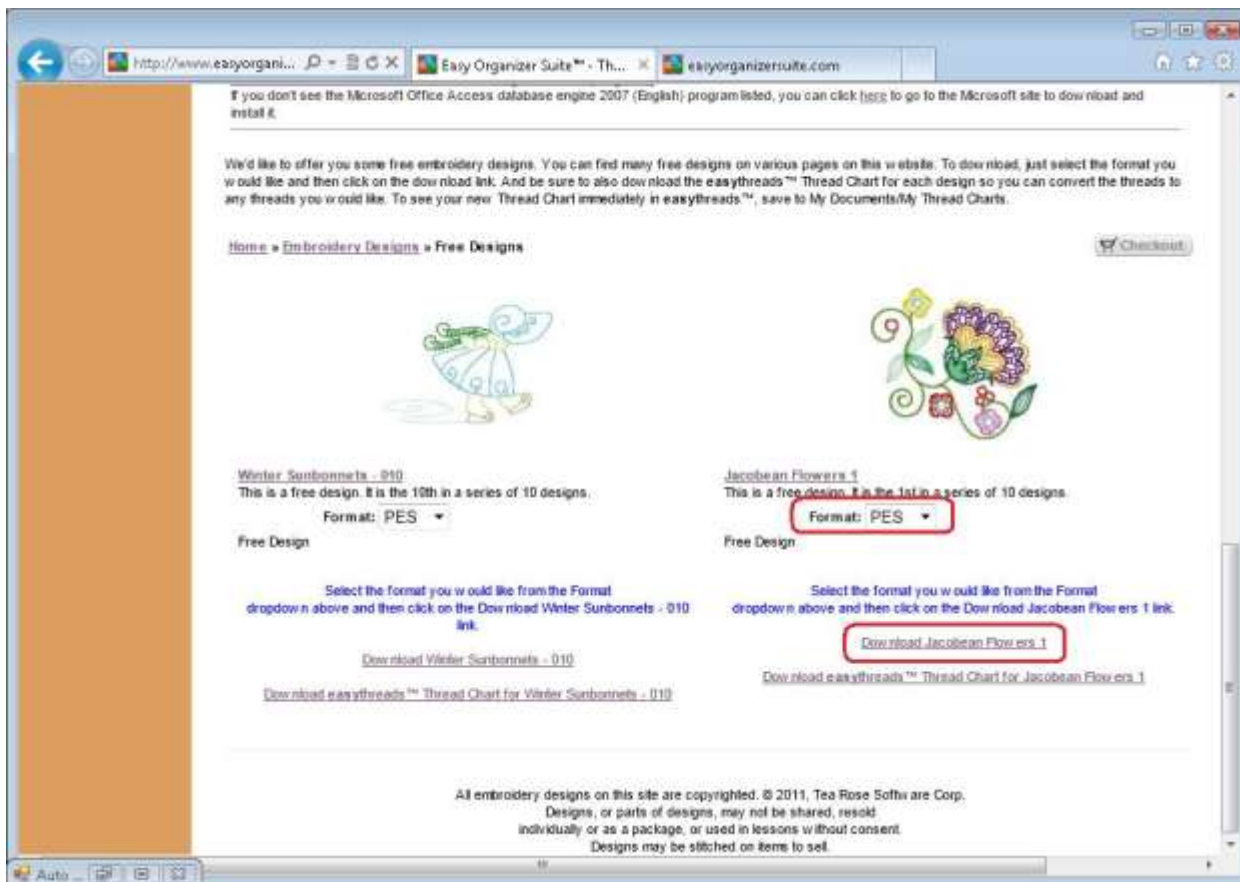


9. The Auto Importer will continue to run in the background. You will see an icon in the System Tray that shows you that it is waiting for a file to be placed in the folder you selected. You can always open the Auto Importer by clicking on the icon in the System Tray.

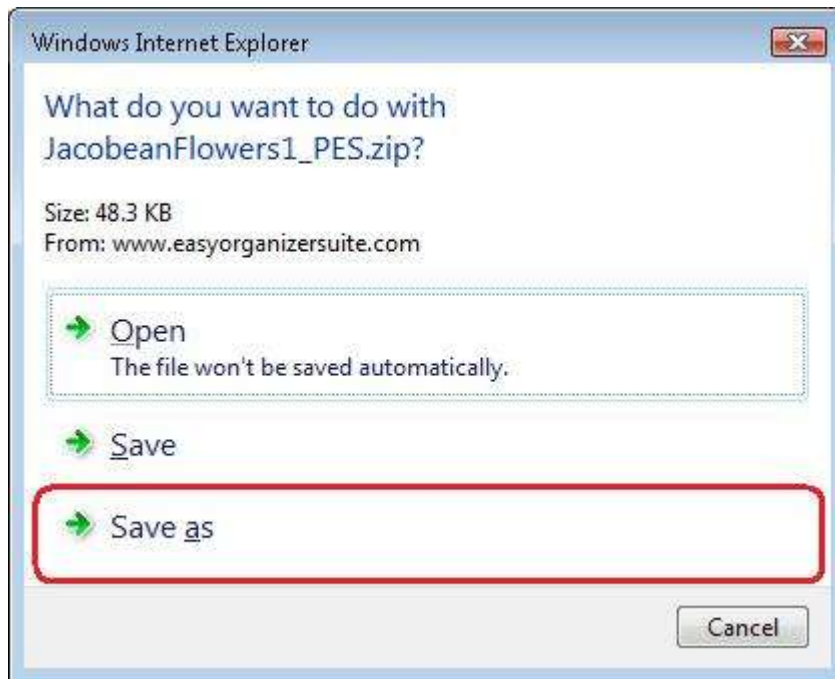


10. Let's now place an embroidery design into the folder that is being watched. Let's use a free embroidery design from the Easy Organizer Suite website. Go to <http://www.easyorganizersuite.com/freetrial.asp> and download the newest free design located at the bottom of the page. Each week, a new free design is placed at the bottom of the Free Trial page, so the newest free design may not be as pictured below.

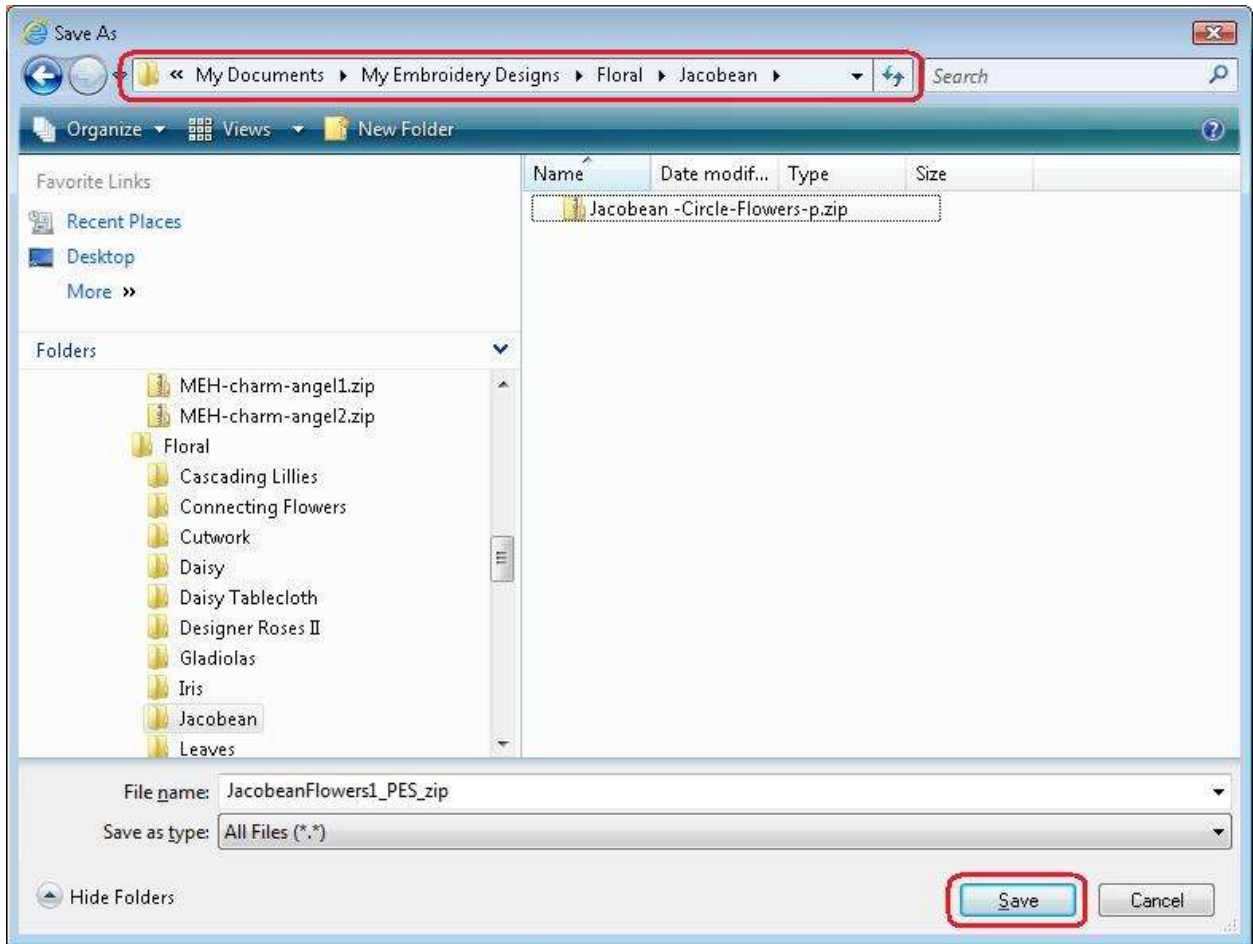
Select PES for the embroidery design format and then click on the link to download the file.



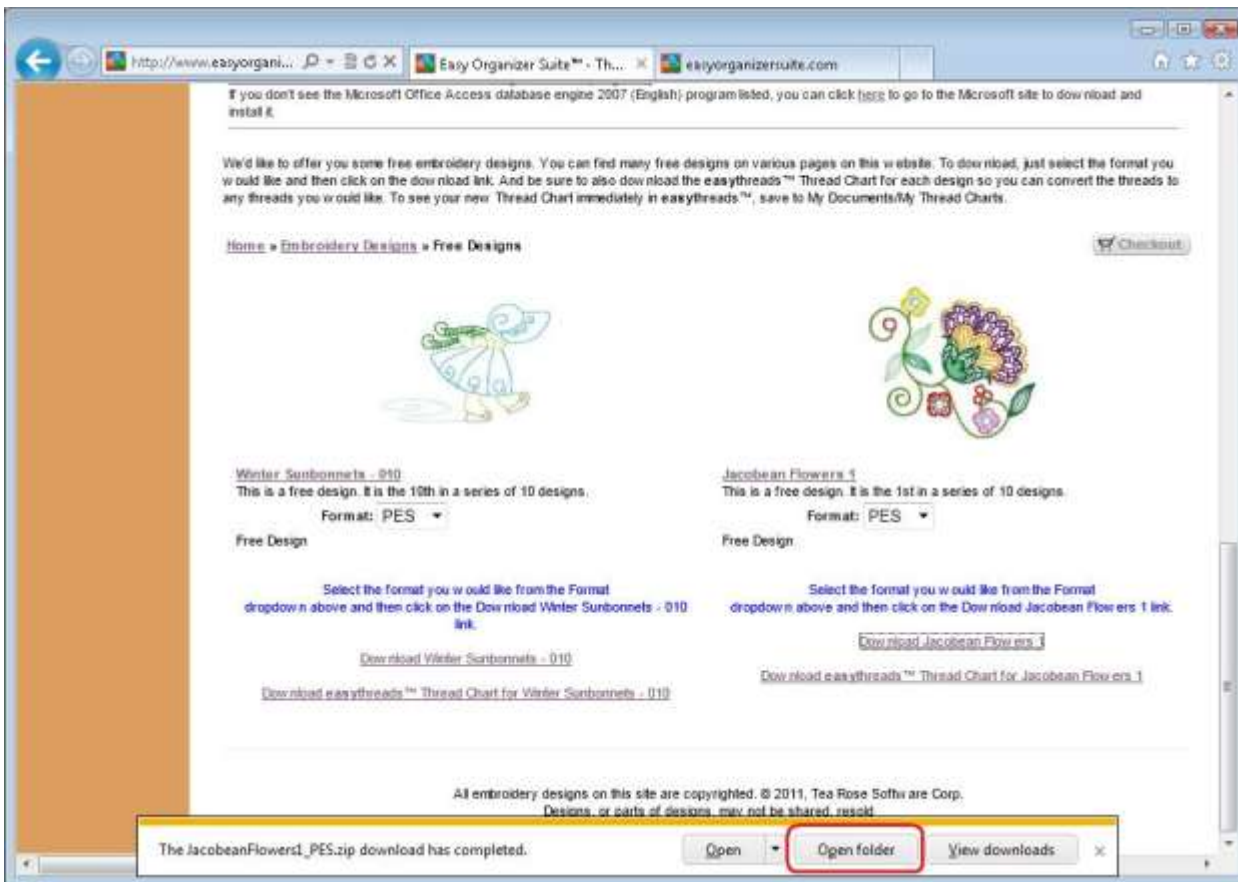
11. A window will open asking you what you want to do. Select Save as.



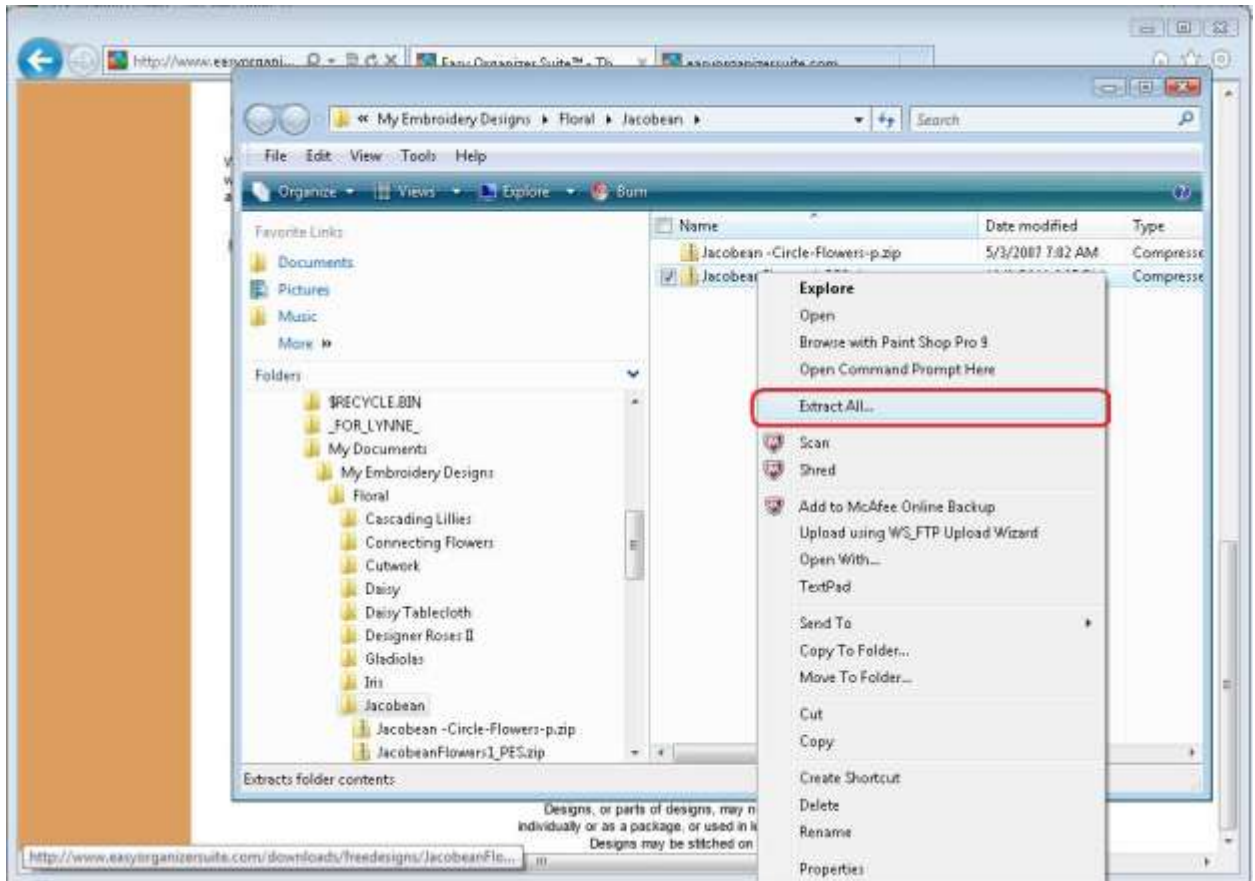
12. Select the folder that you selected to watch, or one of its subfolders. Then click on the Save button.



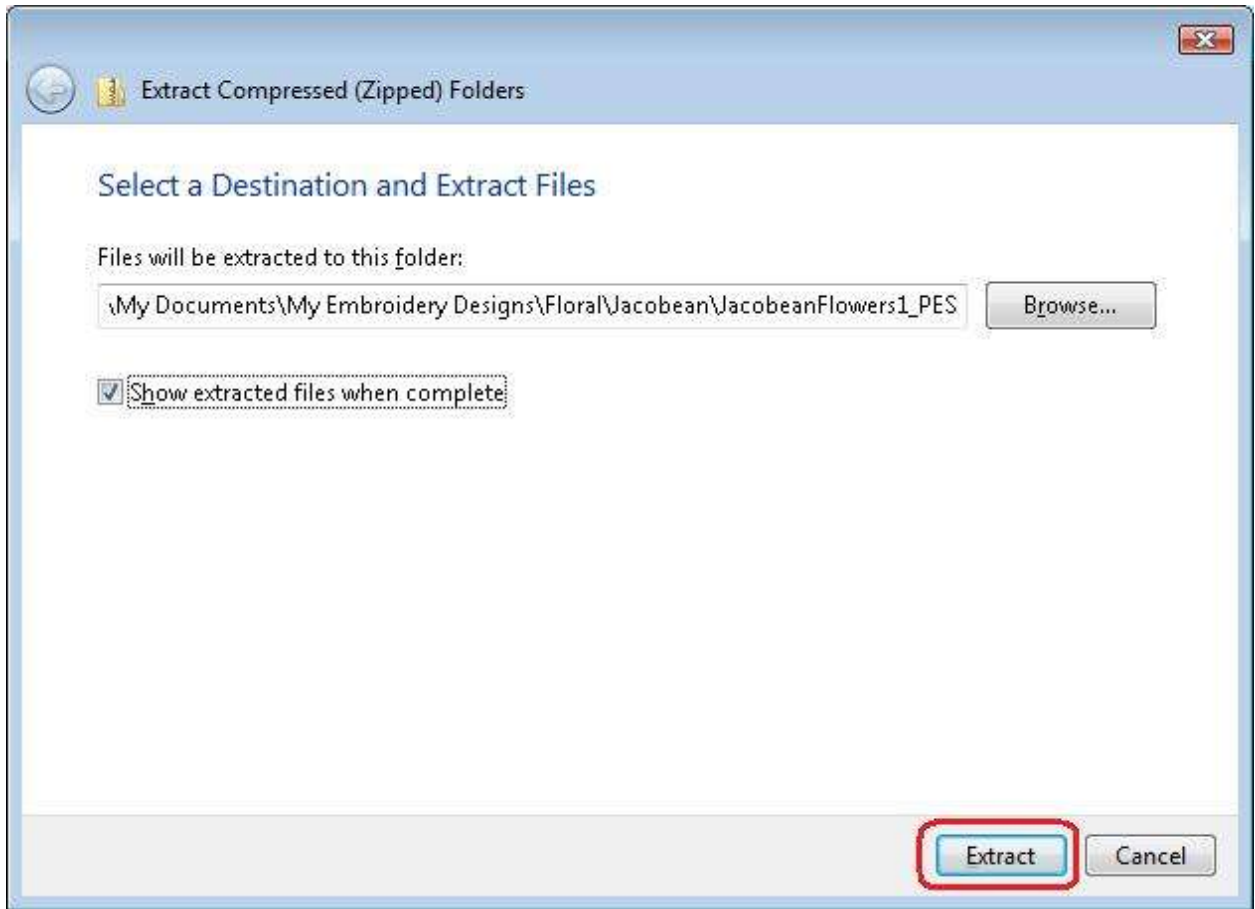
13. Once the embroidery design has finished downloading, select Open folder at the bottom of the browser.



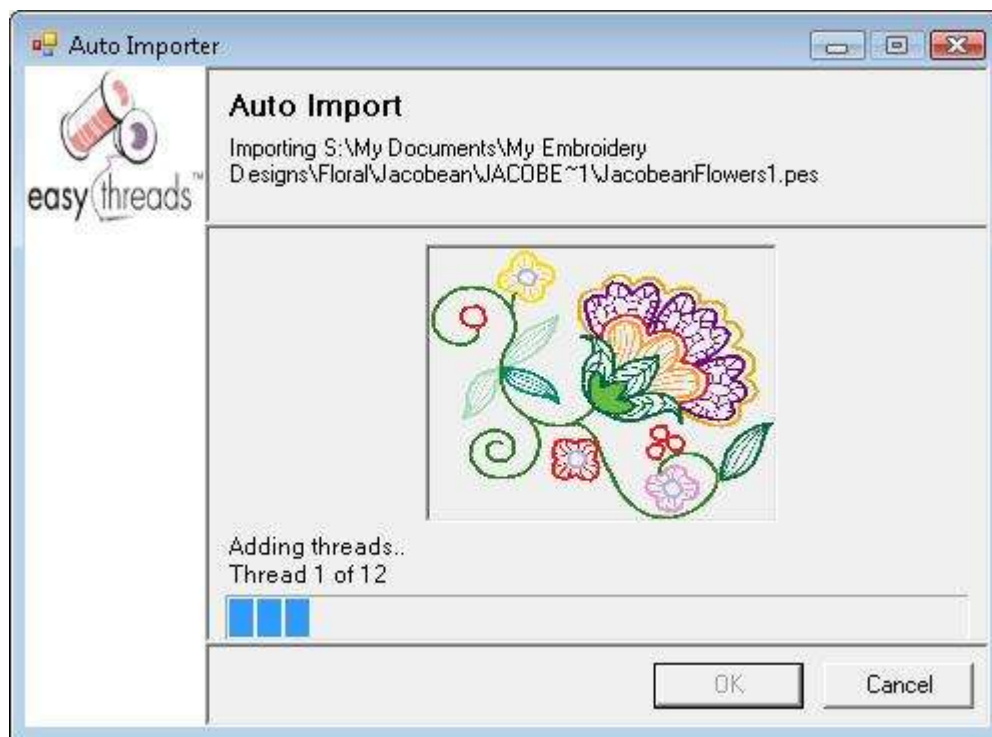
14. Right click on the zip file and select Extract All.



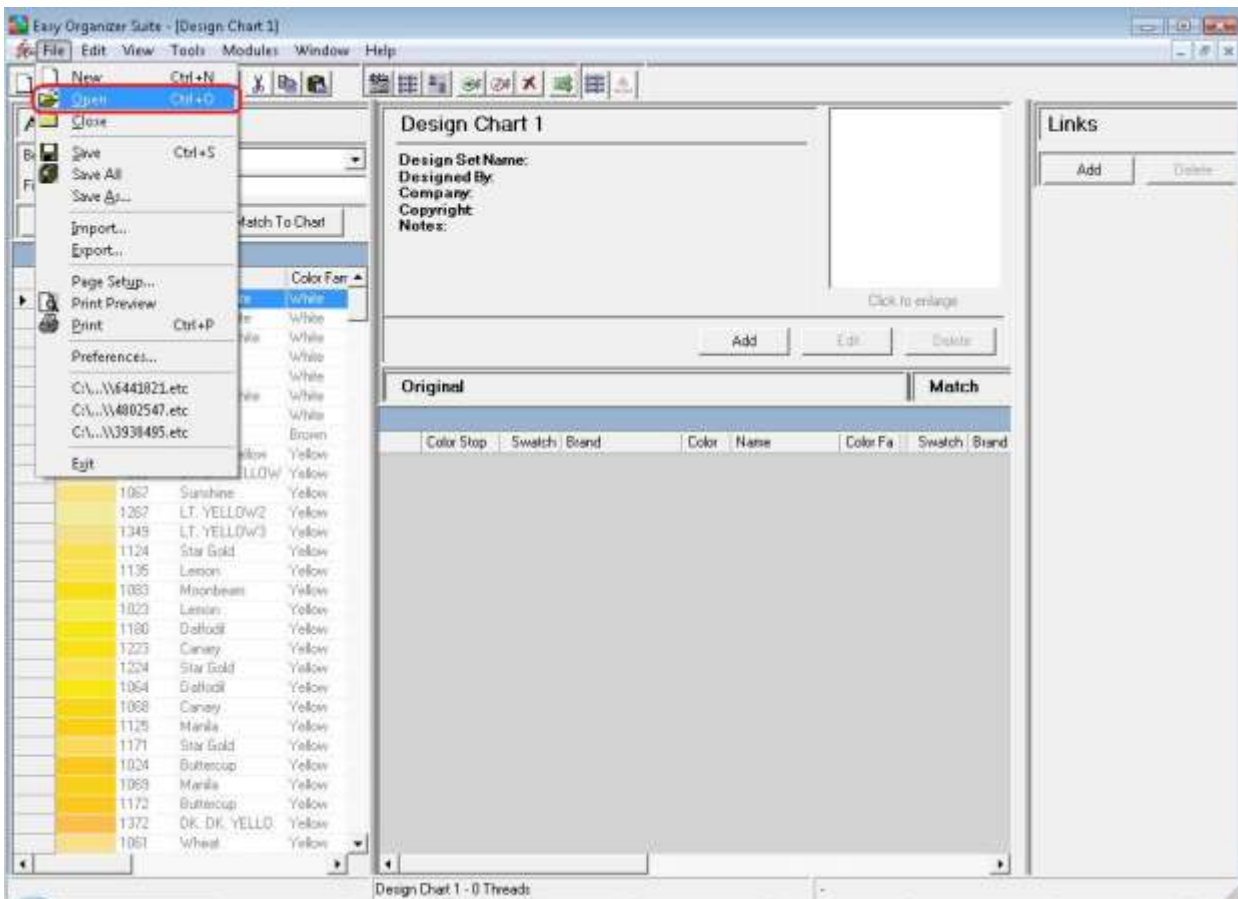
15. Click on Extract to extract the file.



16. The Auto Importer will open and will display a picture of the embroidery design and show the progress of the import. When it is complete, the Auto Importer will go back to the background.

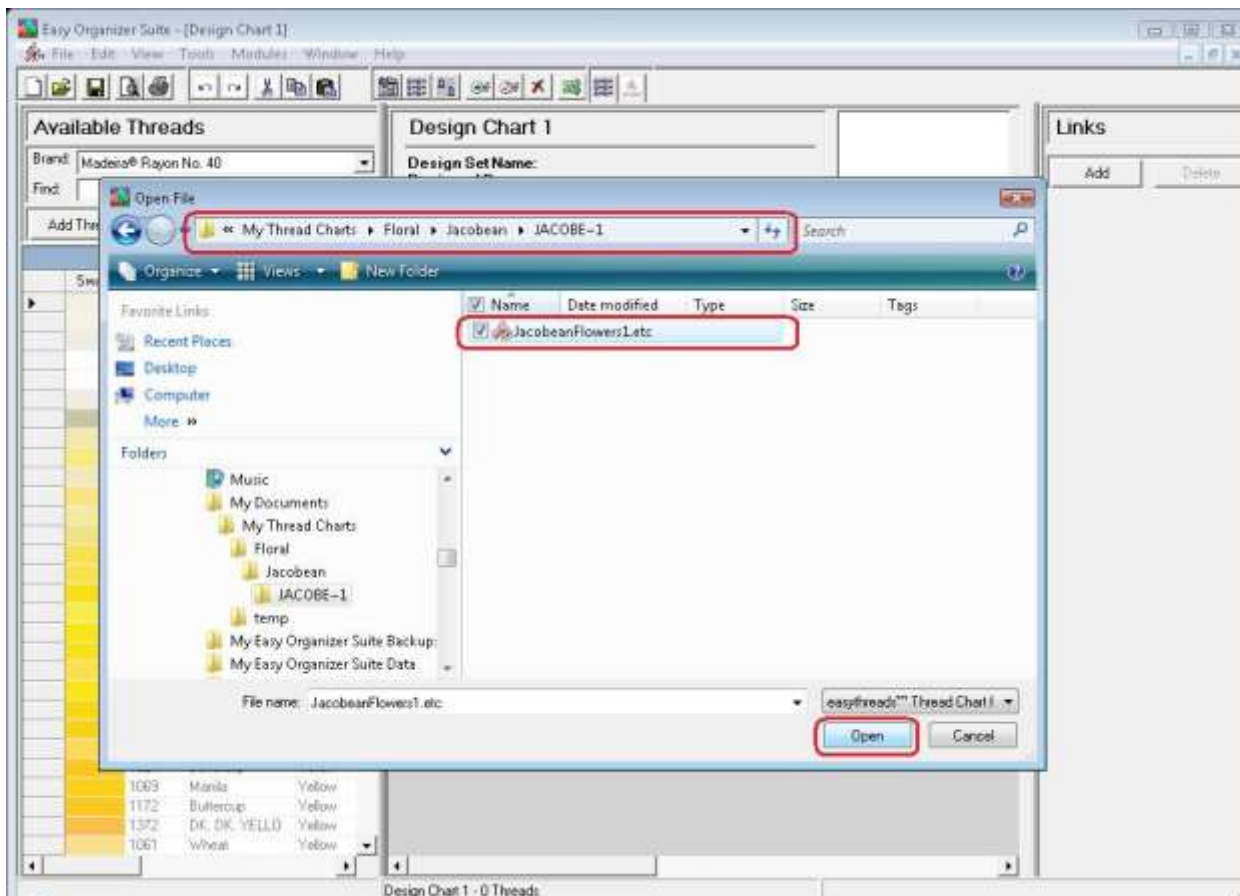


17. Now open Easy Organizer Suite. Open the easythreads module. Select File → Open.

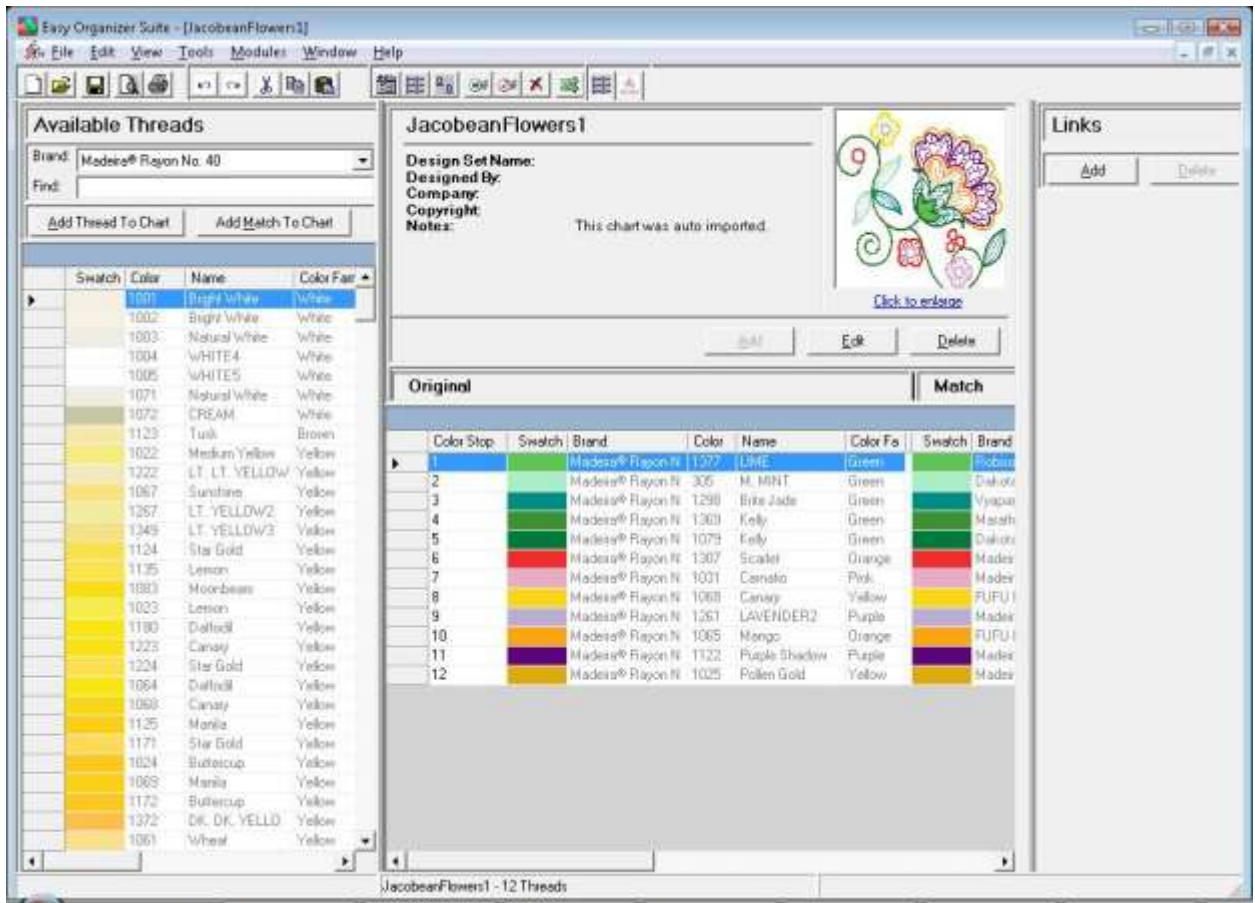


18. The Default Thread Charts folder should open. You will notice that the folder structure of the location of the embroidery design has been created under your Default Thread Charts folder. For this lesson, you will find the new Design Chart for the free design at /My Documents/My Thread Charts/Floral/Jacobean/JACOBE~1. It will be called JacobeanFlowers1.etc.

Select the JacobeanFlowers1.etc file and click on the Open button.



19. You will now see the Design Chart, with the picture of the design, the threads and the matching threads. The Auto Importer used the settings in the Convert Options form to derive the matches.



Congratulations! You have completed Lesson 25 – How to Use The Auto Importer.